

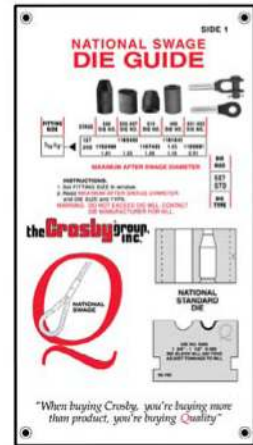
National Steel Swaging Sleeves



S-505

- For Flemish Eye wire rope splicing.
- Designed for low temperature toughness.
- Resists cracking when swaged (equals or exceeds stainless steel sleeves).
- Special processed low carbon steel.
- "COLD TUFF[®]" for better swageability.

The National Die Guide will assist you in selecting the proper dies to meet your swaging needs.

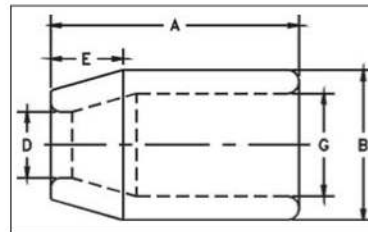


- Can be stamped for identification after swaging without concern for fractures when following these directions.
 - Use round corner stamps to a maximum depth of 0.015 in. (1/64"). The area for stamping should be on the side of the sleeve in the plane of the sling eye, and no less than 0.250 in. (1/4") from either end of the sleeve.
- Standard Steel Sleeve terminations have efficiency ratings as follows based on the catalog strength of wire rope.

S-505 Termination Efficiency		
Size (in.)	Type of Wire Rope*	
	IWRC	FC
1/4 - 1	96%	93%
1-1/8 - 2	92%	89%
2-1/8 and Larger	90%	87%

* NOTE: S-505 Standard Sleeves are recommended for use with 6 x 19 or 6 x 36, IPS or XIP (EIP), XXIP (EEIP), RRL, FC or IWRC wire rope.

Before using any National Swage fitting with any other type lay, construction or grade of wire rope, it is recommended that the termination be destructive tested and documented to prove the adequacy of the assembly to be manufactured.



NOTE: See page 25 for dimensional information.



"Cross Section of Swaged Sleeve"